

# Acoustic Wall Ties

Type AWT



Acoustic brickwork and internal partition wall ties are designed to provide structural stability whilst attenuating noise and vibration between cavity walls.

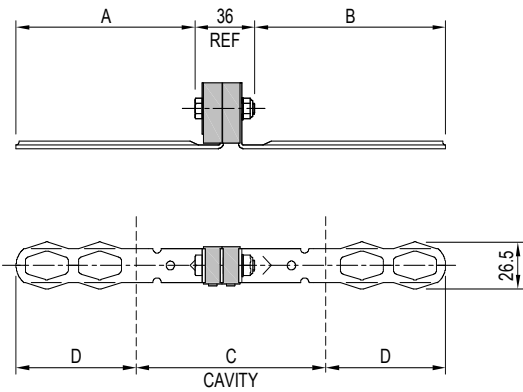
## DESIGN FEATURES

- Grade 304 stainless steel masonry ties, connecting bolts and washers.
- BZP mild steel 'Z' and 'L' brackets for internal partition walls.
- Natural rubber acoustic element ensures no metallic contact between external and inner brickwork and internal partitions.
- Load tested to 0.75 kN in tension, compression and shear.
- Masonry ties designed to BS EN 845 with drip feature and safety ends.
- Variable tie lengths and fixing options available to suit cavity widths 50 mm to 250 mm.
- It is recommended that acoustic wall ties are used in conjunction with acoustic wall bearing pads.

## TYPICAL APPLICATIONS

- Multiplex cinemas.
- Sound and recording studios.
- Hearing test rooms.
- Nightclubs.

### ACOUSTIC WALL TIE AWT.BW

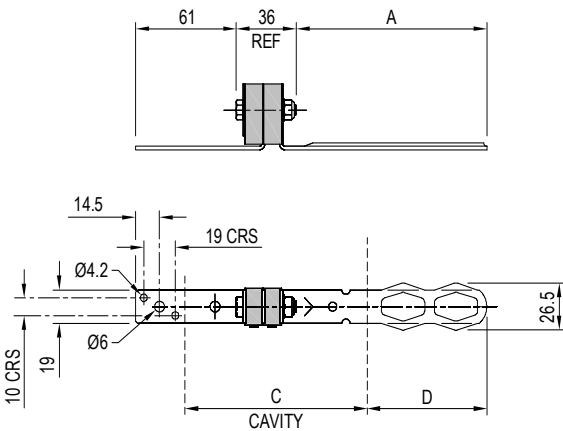


### BRICK / BLOCKWORK TO BRICK / BLOCKWORK - AWT.BW STYLE

| Part No.   | DIMENSIONS (mm) |     |             |                     |
|------------|-----------------|-----|-------------|---------------------|
|            | A               | B   | CAVITY 'C'  | EMBEDMENT DEPTH 'D' |
| AWT.BW.100 | 83              | 90  | 50 & 75 *   | 80 & 67 *           |
| AWT.BW.125 | 108             | 115 | 100 & 125 * | 80 & 67 *           |
| AWT.BW.150 | 133             | 140 | 150 & 175 * | 80 & 67 *           |
| AWT.BW.175 | 158             | 165 | 200         | 80                  |
| AWT.BW.200 | 183             | 190 | 250         | 80                  |

Note: The figures quoted above are nominal and for guidance only.  
 \* embedment for 75mm and 175mm cavity.  
 All Stainless Steel fixings.

### ACOUSTIC WALL TIE AWT.LBW

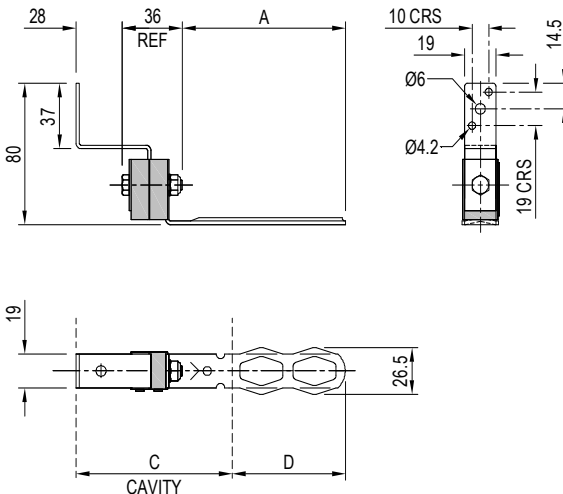


### BRICK / BLOCKWORK TO INNER PARTITION - AWT.LBW STYLE

| Part No.    | DIMENSIONS (mm) |            |                     |
|-------------|-----------------|------------|---------------------|
|             | A               | CAVITY 'C' | EMBEDMENT DEPTH 'D' |
| AWT.LBW.100 | 90              | 75         | 80                  |
| AWT.LBW.125 | 115             | 100        | 80                  |
| AWT.LBW.175 | 165             | 150        | 80                  |
| AWT.LBW.200 | 190             | 175        | 80                  |

Note: The figures quoted above are nominal and for guidance only.  
 'L' Bracket B.Z.P all other components Stainless Steel.

### ACOUSTIC WALL TIE AWT.ZBW



### BRICK / BLOCKWORK TO INNER PARTITION - AWT.ZBW STYLE

| Part No.    | DIMENSIONS (mm) |             |                     |
|-------------|-----------------|-------------|---------------------|
|             | A               | CAVITY 'C'  | EMBEDMENT DEPTH 'D' |
| AWT.ZBW.100 | 90              | 75          | 80                  |
| AWT.ZBW.125 | 115             | 100         | 80                  |
| AWT.ZBW.175 | 165             | 150         | 80                  |
| AWT.ZBW.200 | 190             | 175 & 200 * | 80 & 55 *           |

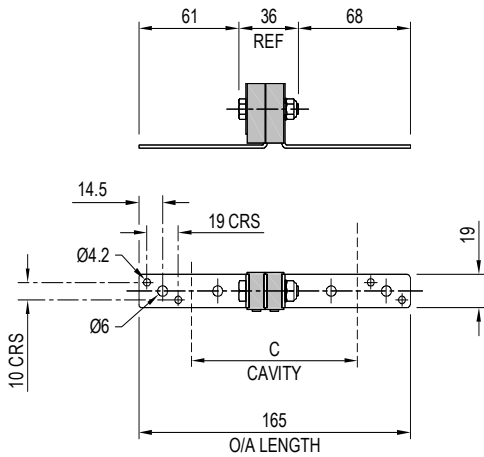
Note: The figures quoted above are nominal and for guidance only.  
 \* embedment for 200mm cavity.  
 'Z' Bracket B.Z.P all other components Stainless Steel.

For full installation instructions please refer to our data sheet DS087.

For more detailed information and technical assistance please contact our Technical Department.

In the interests of continual development, the Company reserves the right to make modifications to these details without notice.

### ACOUSTIC WALL TIE AWT.LL

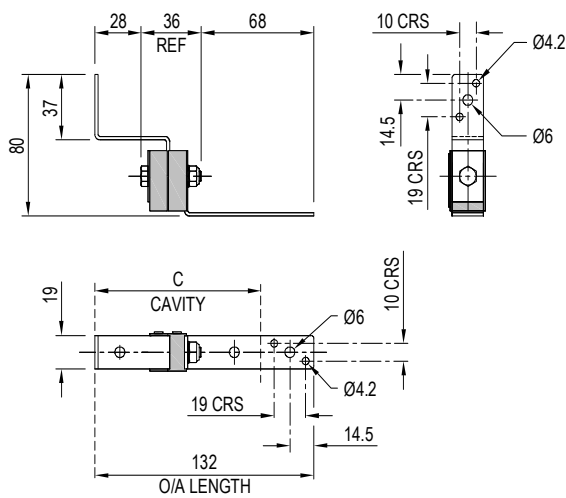


### INNER PARTITION TO INNER PARTITION - AWT.LL STYLE

| Part No. | DIMENSIONS (mm) |
|----------|-----------------|
|          | CAVITY 'C'      |
| AWT.LL   | 50 TO 125       |

Note: The figures quoted above are nominal and for guidance only.  
 'L' Brackets B.Z.P all other components Stainless Steel.

### ACOUSTIC WALL TIE AWT.LZ

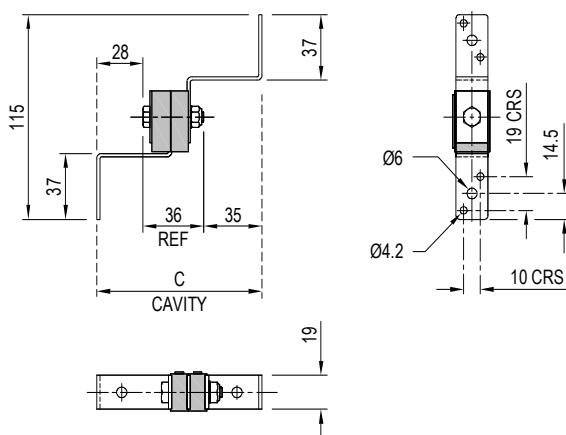


### INNER PARTITION TO INNER PARTITION - AWT.LZ STYLE

| Part No. | DIMENSIONS (mm) |
|----------|-----------------|
|          | CAVITY 'C'      |
| AWT.LZ   | 75 to 100       |

Note: The figures quoted above are nominal and for guidance only.  
 'L' and 'Z' Brackets B.Z.P all other components Stainless Steel.

### ACOUSTIC WALL TIE AWT.ZZ



### INNER PARTITION TO INNER PARTITION - AWT.ZZ STYLE

| Part No. | DIMENSIONS (mm) |
|----------|-----------------|
|          | CAVITY 'C'      |
| AWT.ZZ   | 100             |

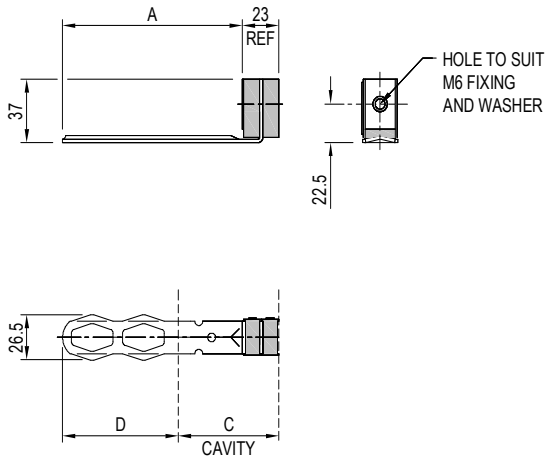
Note: The figures quoted above are nominal and for guidance only.  
 'Z' Brackets B.Z.P all other components Stainless Steel.

For full installation instructions please refer to our data sheet DS087.

For more detailed information and technical assistance please contact our Technical Department.

In the interests of continual development, the Company reserves the right to make modifications to these details without notice.

### ACOUSTIC WALL TIE AWT.WPBW

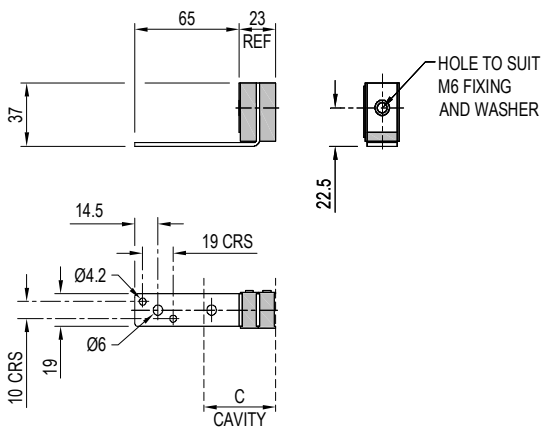


### WIND POST TO BRICK / BLOCKWORK - AWT.WPBW STYLE

| Part No.     | DIMENSIONS (mm) |             |                     |
|--------------|-----------------|-------------|---------------------|
|              | A               | CAVITY 'C'  | EMBEDMENT DEPTH 'D' |
| AWT.WPBW.125 | 112             | 50          | 85                  |
| AWT.WPBW.150 | 137             | 75          | 85                  |
| AWT.WPBW.175 | 162             | 100         | 85                  |
| AWT.WPBW.200 | 187             | 125 & 150 * | 85 & 60 *           |

Note: The figures quoted above are nominal and for guidance only.  
\* embedment for 150mm cavity.  
All Stainless Steel fixings.

### ACOUSTIC WALL TIE AWT.WPL

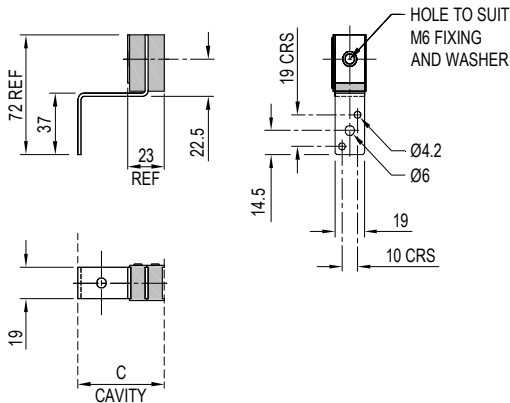


### WIND POST TO INNER PARTITION - AWT.WPL STYLE

| Part No. | DIMENSIONS (mm) |  |
|----------|-----------------|--|
|          | CAVITY 'C'      |  |
| AWT.WPL  | 25 to 65        |  |

Note: The figures quoted above are nominal and for guidance only.  
'L' Bracket B.Z.P all other components Stainless Steel.

### ACOUSTIC WALL TIE AWT.WPZ



### WIND POST TO INNER PARTITION - AWT.WPZ STYLE

| Part No. | DIMENSIONS (mm) |  |
|----------|-----------------|--|
|          | CAVITY 'C'      |  |
| AWT.WPZ  | 55              |  |

Note: The figures quoted above are nominal and for guidance only.  
'Z' Bracket B.Z.P all other components Stainless Steel.

### General Notes

Check acoustic wall tie is suitable for the type of installation and cavity size i.e. external face brick / blockwork to inner cavity walls, wind post or studwork.

Each masonry tie must be embedded a minimum of 50mm into brick / blockwork.

Acoustic wall ties must be installed with rubber part upper most or 'top' on masonry tie.

Ensure wall loading and spacings do not exceed acoustic wall tie maximum working load of 0.75 kN.

It is important that no oil or solvent be allowed to contaminate the wall tie rubber during installation (refer to data sheet DS 041 for details of natural rubber properties).

**For full installation instructions please refer to our data sheet DS087.**

**For more detailed information and technical assistance please contact our Technical Department.**

In the interests of continual development, the Company reserves the right to make modifications to these details without notice.